

# CREATING A NEW SENSE OF PLACE



## THE OWL'S NEST LOT 40

DARYL RANTIS, ARCHITECT  
RYAN McLELLAN, BUILDER

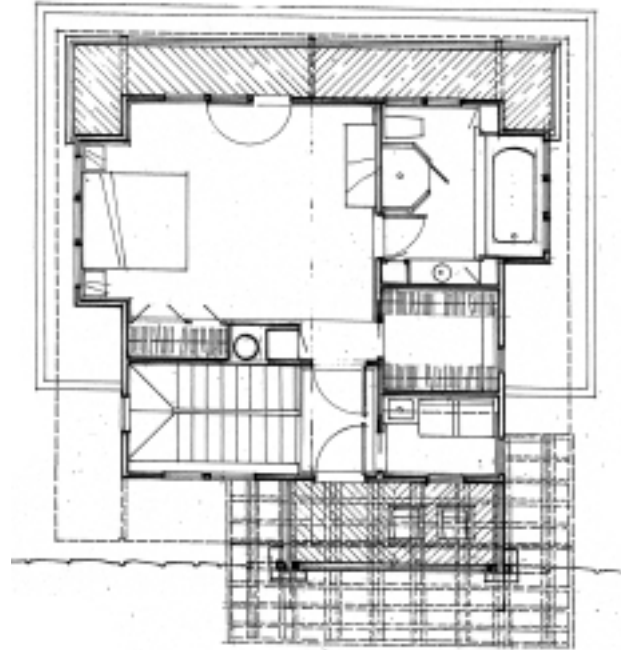
# THE OWL'S NEST

This Tree House is located on a ridge with 360 degree mountain views. Capture sunrises and sunsets from the wraparound balconies among the native Laurels. Enjoy year round comfort or a place to spend a needed weekend get away.

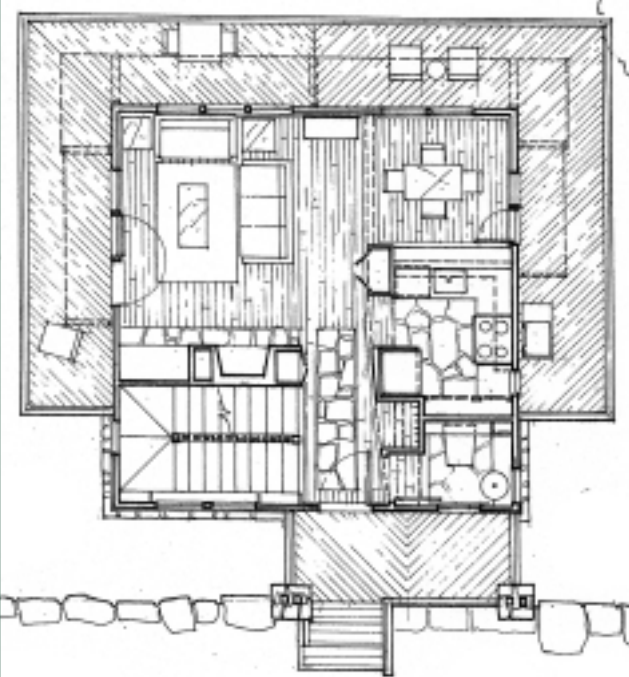
**Special features include:**

- ❖ 2BR/2.5 baths
- ❖ Wrap around upper and lower balconies
- ❖ Stone wood burning fireplace
- ❖ Black Walnut floors
- ❖ Balcony off Master suite offers breathtaking mountain views
- ❖ Audio system throughout the entire house
- ❖ Master bath with a soaking tub capturing mountain views
- ❖ Knotty Alder cabinets
- ❖ Timber detailing with all interior wood walls and ceilings
- ❖ Laundry adjacent to master bath
- ❖ Approximately 1,500 hsf with 874 sf of balconies and porches

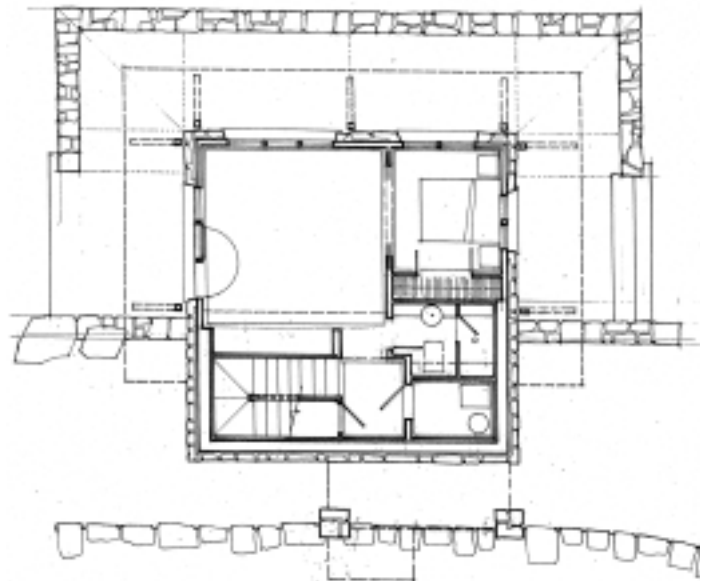
UPPER LEVEL



MAIN LEVEL



LOWER LEVEL



**Call 828.669.6657 to schedule your personal visit.**



CHESHIRE REALTY  
7 CHESHIRE DRIVE  
BLACK MOUNTAIN NC 28711  
828.669.6657 • Fax 828.669.5733  
Email-info@villageofcheshire.com • www.villageofcheshire.com

*While floor plans can be reproduced, each home will be built only once.  
As with any new project, Cheshire's plans are evolving and subject to change.*